

# SSE

## Slough Demolition

### > Welcome

The aim of this session is to provide local businesses, residents and other stakeholders the opportunity to learn more about our plans for demolition at our site on the Slough Trading Estate.

SSE owns and operates a Combined Heat and Power plant on the Slough Trading Estate. Decommissioning of specific areas and associated plant is already underway in preparation for demolition. Demolition will be carried out by our Principal Contractor Keltbray and works are expected to begin shortly. The remaining part of the Slough Heat and Power plant currently supplies energy, water and heat to its customers on the trading estate and this will not be affected by the demolition works. The demolition works are required to facilitate a new Multifuel development at the site.



Planning permission to construct a Multifuel facility at the site was granted in 2015. Construction of the new Multifuel facility, which will have a generating capacity of up to 50MW, is expected to commence following demolition activities at the site.

### Who is SSE?

SSE plc is one of the UK's leading energy companies, involved in the generation, distribution and supply of electricity and in the extraction, storage, distribution and supply of gas. Its core purpose is to provide the energy people need in a reliable and sustainable way.

It supplies energy to around 7 million energy and home services customers throughout Great Britain and Ireland, is frequently ranked number one for customer service and is the UK's leading generator of electricity from renewable sources.



# SSE Slough Demolition

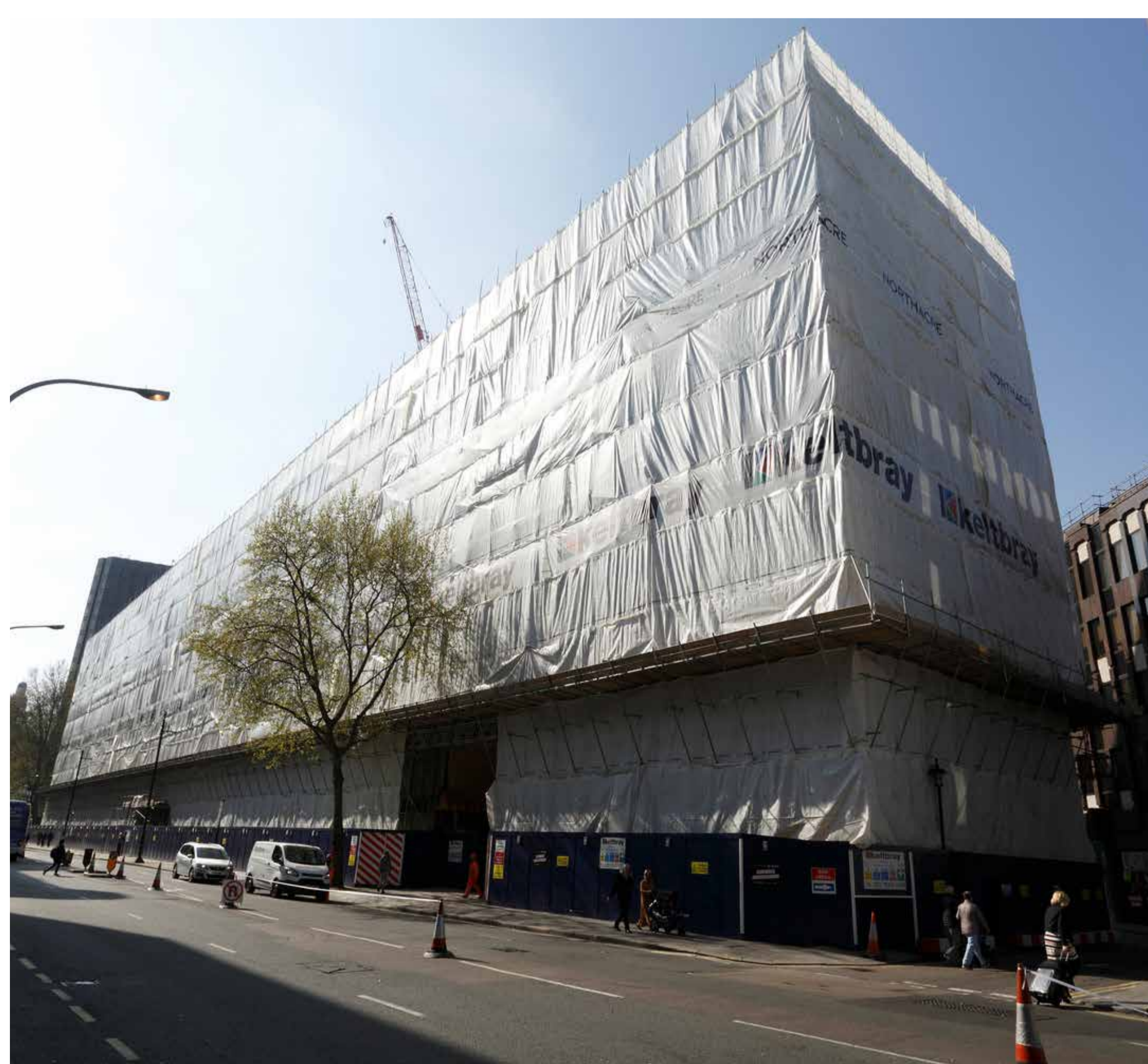
## > The Demolition Works

Demolition works are being carried out by our Principal Contractor Keltbray. Keltbray is a UK-leading specialist contractor, which has a wealth of experience in complex demolition and decommissioning works.

There will be no explosive demolition associated with this project. In the early stages of the works Keltbray will remove a section of the boiler house roof to enable the erection of a tower crane. The boiler house will then be clad in a fully encapsulated demolition scaffolding; a lifting frame will be placed on the roof of the boiler house to facilitate lowering of the boilers – once the boilers have been removed, the boiler house will be deconstructed.



Deconstruction of the chimney stack will run in conjunction with the deconstruction of the boiler house. Keltbray will erect a climbing platform inside the chimney. The platform will raise a micro excavator to the top of the chimney; and the chimney will be deconstructed, top down in a piece meal fashion. Once the height of the chimney has been reduced to approximately 15 meters from existing road level, the lower section of the chimney will be demolished.



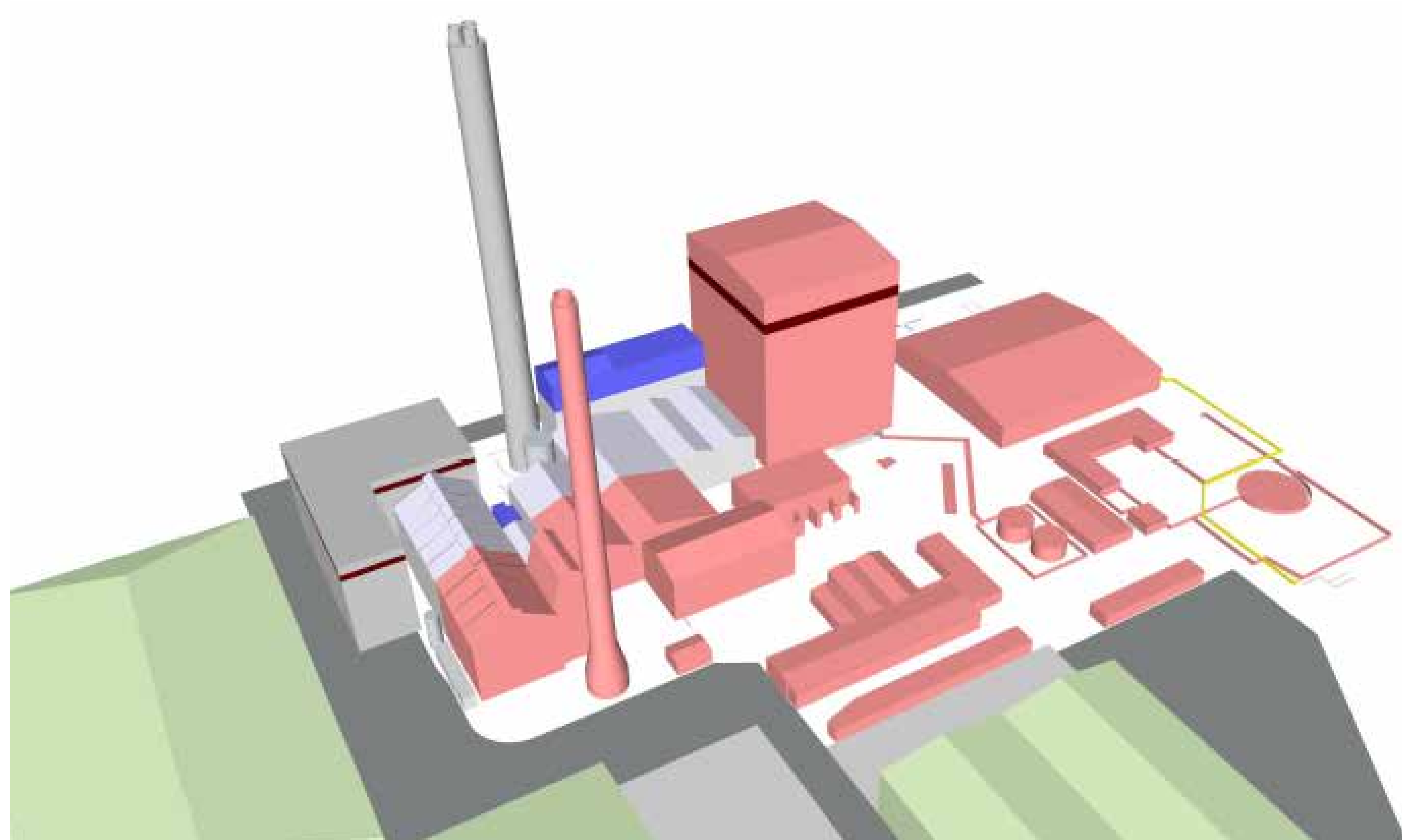
**There are several smaller structures on the site which will be demolished as part of the process. All of the demolition works are expected to take around 12 months.**

# SSE Slough Demolition

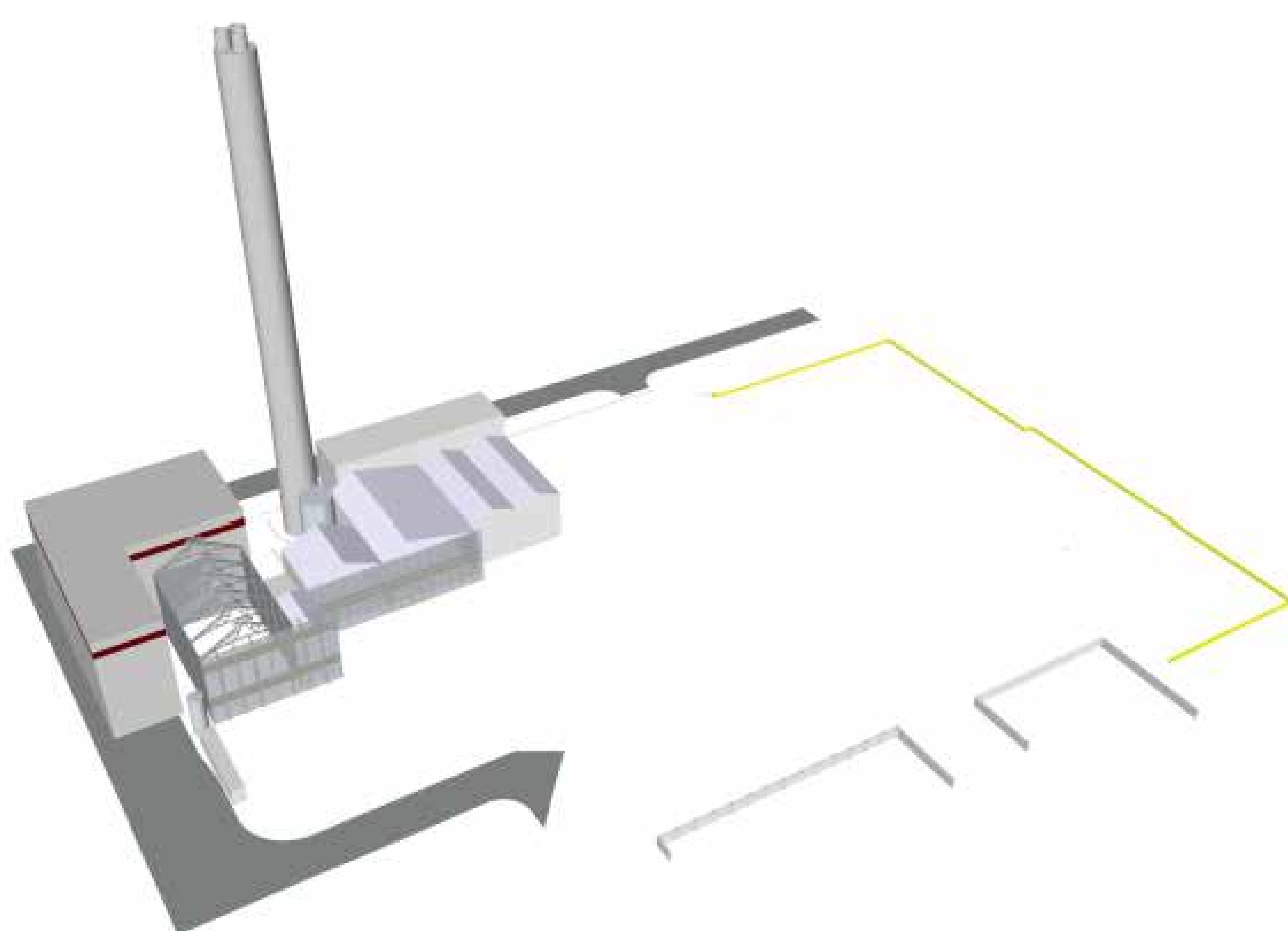
## > Site layout

Image 1 depicts existing layout of structures on site with image 2 showing the layout following the completion of demolition activity.

Existing site layout



Expected site layout post demolition works



# SSE Slough Demolition

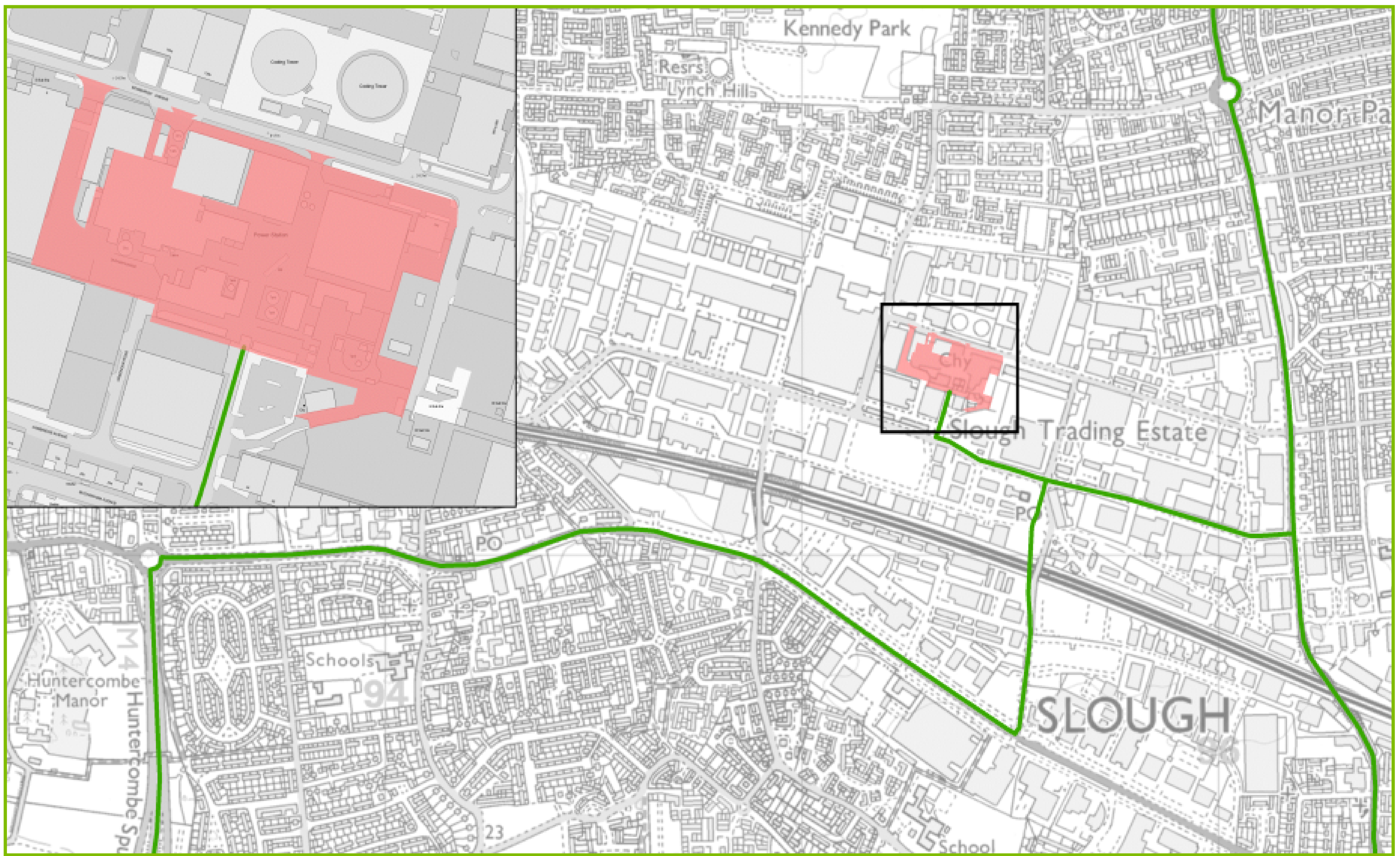
## > Traffic and Transport

SSE is aware that transport routes will be a key concern for neighbours of the site. A traffic management plan has been established in order for traffic associated with the demolition works to be managed.

Vehicles and plant will enter and exit in a forwards direction turning left from Buckingham Avenue onto Harwich Road access point; they will predominantly leave the site via the same route. On any occasions that this route may not be possible, vehicles will leave via the secondary egress point turning left onto Edinburgh Avenue. We estimate that there will be up to approximately 30 HGV movements per day.

Alongside ongoing vehicle movements there will be a small number of abnormal load deliveries, such as cranes and excavators, which will require temporary road closures. SSE and Keltbray will work closely with local

police to ensure that any disruption will be kept to a minimum. Further details regarding these movements will be shared with potentially impacted neighbours in advance where possible.



A map to illustrate the expected route for associated traffic moments

# SSE

## Slough Demolition

### > Environmental Monitoring

In line with the planning conditions agreed between the project and Slough Borough Council, we have strict limits and controls around noise, vibration and dust. Equipment will be installed around the site which will monitor levels during working hours, and the team will be alerted if levels are exceeded.

A number of control measures have been taken to ensure that permitted levels are not exceeded. For noise and vibration, these include the selection of the best equipment available and for dust, this includes water suppression fans.

The stack will be encased within a scaffold system and acoustic blankets.



Examples of equipment that will be used to measure and monitor  
① noise, ② vibration and ③ dust.

# SSE

## Slough Demolition

### > Next Steps

In early Autumn, Keltbray will begin mobilisation works at the site, ahead of the main demolition works starting. Demolition works are expected to last for approximately one year.

Planning permission to construct a Multifuel facility at the site was granted in 2015. Following a Financial Investment Decision, construction works on the new Multifuel plant are expected to commence following demolition activities at the site. Construction of the new Multifuel facility, which will have a generating capacity of up to 50MW, are expected to continue for approximately 3 years.



The project website will be updated regularly and provide up to date information on the demolition activities:

[www.sse.com/  
sloughmultifuel](http://www.sse.com/sloughmultifuel)

If you have any questions or concerns during the works, please contact the Project Liaison Manager, Jayne Collings on:

**07825 015537** or  
[jayne.collings@sse.com](mailto:jayne.collings@sse.com)

Thank you for taking the time to visit us today

