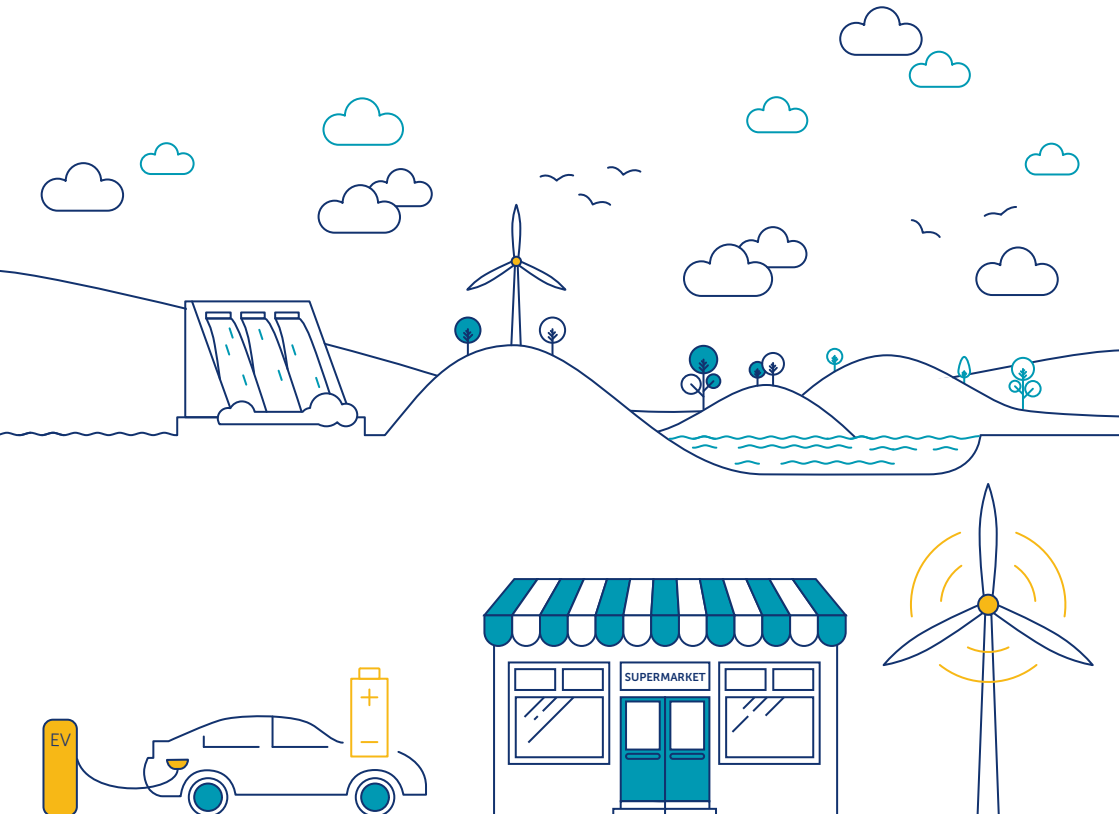


Your guide to energy efficiency

Becoming more energy efficient is a simple way to help your business lower costs and reduce your carbon footprint.



Your first steps towards a brighter, greener future

You can reduce your energy bills by making some simple changes. And when your efficiency strategy enhances working conditions, it can boost staff well-being and increase productivity.

So where should you begin? The first step is understanding your energy usage. Getting a smart meter can help you identify the parts of your business that use the most energy. Once you understand that, you can work out how to use less energy, lower your energy bills, and reduce your carbon footprint.

Take control of your energy usage with smart

Smart meters record your energy use and send us your readings automatically. Bringing an end to the hassle of manual meter readings and estimated bills.*

You'll also have access to our free online energy management platform, SSE Clarity.† SSE Clarity uses data from your smart meter to show how much energy you're using and when, helping you find ways to save energy.



* In the unlikely event that our communication with your smart meter is disrupted, we may advise you to submit a manual meter reading or you may receive an estimated bill.

† SSE Clarity terms and conditions apply.

What is SSE Clarity?

With SSE Clarity you can view your data by type, time, site or supply in clear and simple graphs and tables. The analysis and trending tools help you spot patterns, compare reports and plan for the future.

You can also set up alarms and email alerts to help you react to issues fast. Best of all, SSE Clarity offers useful 'snapshots' that display the energy data that's most relevant to your business.

Understanding how and when your business uses energy can pinpoint places to lower your usage. And when you're saving energy, you're saving money.



A central place to view, analyse and report on your energy usage



Alarms and email alerts to identify any problems



Identify ways to save energy and money



A single point of support from our dedicated help desk

Step 1: Book your smart meter installation



Visit:
sseenergysolutions.co.uk/get-smart

Complete the form and a member of our team will be in touch.

Step 2: Set up SSE Clarity

Once your new meter is installed, it's easy to get started with SSE Clarity.



Call:
0330 6780 581



Enter your details at:
sseenergysolutions.co.uk/clarity



Small changes, big rewards

A few simple changes to your business can make a big difference to your energy efficiency.



Conduct an energy audit

- A business energy audit should assess how and where your business uses gas and electricity. The main aim of the auditing process is to identify energy-saving opportunities
- For small and medium-sized businesses, a simple audit involves walking around your premises and completing an energy audit checklist, looking at areas such as heating, lighting, equipment, insulation and employee behaviour
- For larger businesses, a professional energy audit is the best place to start. Your qualified assessor will look closely at every aspect of your energy consumption and suggest specific solutions
- You can find more information on how to conduct an assessment, as well as free checklist on our dedicated blog sseenergysolutions.co.uk/energy-audit



Engage employees

- It's much easier to become a more energy efficient business if you have the support of your employees
- Involve and encourage your team to start coming up with ideas and suggestions that will work for your business
- Draw up a sustainability policy as part of the staff handbook so people know what is expected of them



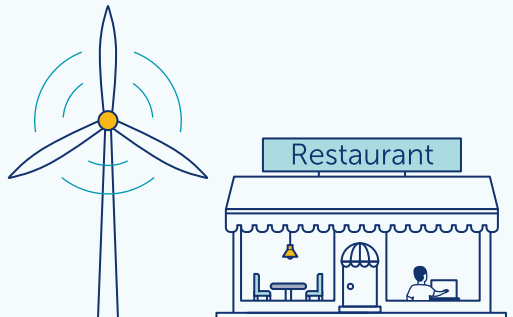
In the office

- Activate energy saving mode on any computers, laptops, printers and copiers, this will allow the machine to automatically power-down after a set time period
- Switch off computers and other electrical equipment overnight and when they're not being used
- Place photocopiers in areas that are naturally ventilated to help avoid the air conditioning having to compensate for the heat it produces



In the factory or warehouse

- Only run air compressors when needed and check for leaks and have them repaired immediately
- Conveyor systems, machine tools and other equipment should be switched off when not in use
- Fit higher efficiency motors and Variable Speed Drives (VSDs) to equipment to reduce running costs





Heating

- Ensure any heaters or boilers are serviced at least annually and adjusted for maximum efficiency
- Limit the use of portable heaters, but if used, install a time switch so they turn off after a designated period
- Avoid operating heaters and air conditioning units at the same time
- Install local instantaneous water heaters where small quantities of hot water are needed a long way from the central heating plant
- Set room thermostats around 19°C to 20°C but consider the activity in the area. For example, highly active places, such as a warehouse, may not need to be heated as the air temperature is high
- Divide the building into zones, so you can adjust the heating for each area
- Where possible, install thermostatic radiator valves to provide local control of radiators
- Place thermostats away from draughts and direct sunlight and at a distance from any heating sources
- Instead of opening windows when heating the building, turn down thermostats to a comfortable temperature
- Fit draught strips and seal up windows and doors that are no longer in use



Lighting

- Replace old-fashioned bulbs and strip lights with energy-efficient LED lights
- Fit motion sensors in toilets and corridors so lights only switch on when someone is in the area
- Fit lighting controls to reduce the amount of energy used by your lights
- Use 'task lighting' by lighting just the working area to a higher level and providing lower-level background for the rest of the space



Further information

You can also visit Carbon Trust at carbontrust.com, where you can find impartial information and assistance to improve your energy efficiency. Carbon Trust is an independent body which helps organisations contribute to, and benefit from a more sustainable future through carbon reduction, resource efficiency strategies and commercialising low carbon technologies.

We've listed some of the most common energy efficiency advice in the previous pages, but for more information and specific sector related advice visit:



sseenergysolutions.co.uk/energy-efficiency



SSE Energy Solutions is bound by the Retail Energy Code (REC) Smart Installation Schedule. The Schedule aims to ensure smart meter installation is a positive experience for you, the customer. The REC schedule sets minimum standards which all members must follow, so you know what to expect during the installation process. It also ensures we help you understand the benefits smart meters can bring to individual customers, and as part of the wider industry Smart Programme.

SSE Energy Solutions is a trading name of SSE Energy Supply Limited, registered in England and Wales number 03757502 which is a member of the SSE Group. The registered office of SSE Energy Supply Limited is No. 1 Forbury Place, 43 Forbury Road, Reading, RG1 3JH.

ENEFL_123